

Citrus Canker Eradication Program Update





Photo courtesy of Ultimate Chase Video

Richard Gaskalla
Director, Division of Plant Industry



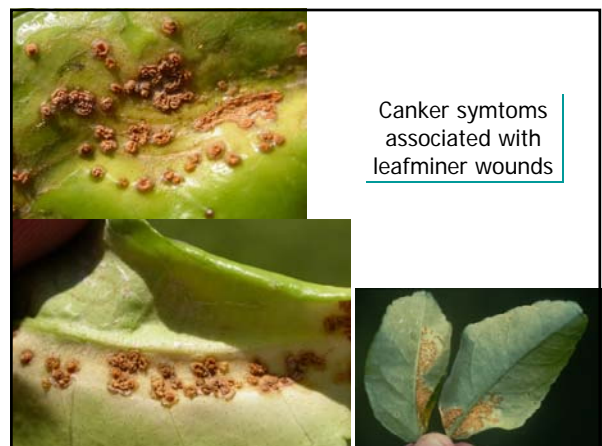
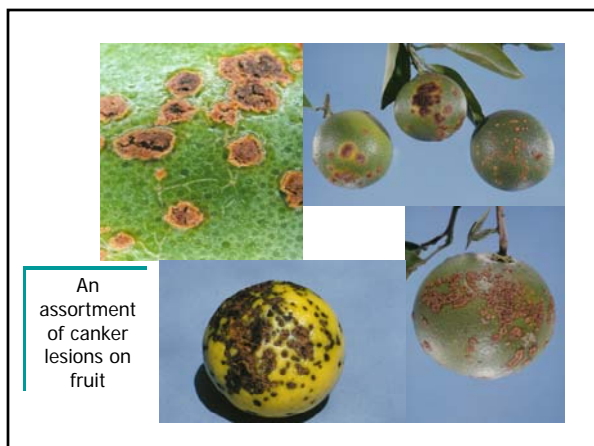
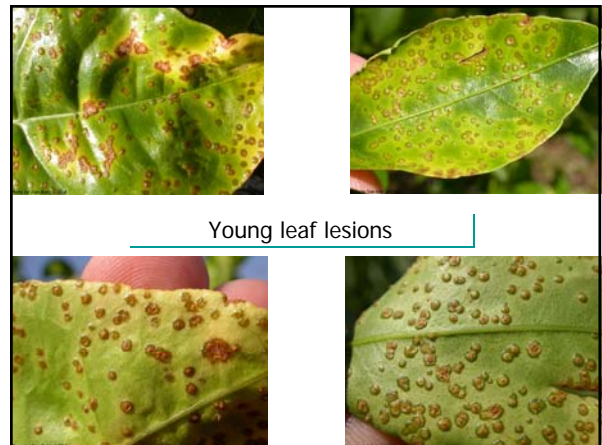
Florida Department of Agriculture & Consumer Services, Charles H. Bronson, Commissioner
Division of Plant Industry

History

- Canker found in 1915
- Eradicated in 1933
- 50 years later found again in Manatee County
- Eradicated in 1992
- Found again in Miami in 1995





Florida Department of Agriculture & Consumer Services
Division of Plant Industry






Biology

- **Canker is a bacterial disease spread by**
 - Wind-blown rain
 - People and equipment
 - Movement of infected plant material
- **There is no known cure for canker**
- **Only method of control is to remove infected and exposed trees**

 Florida Department of Agriculture & Consumer Services
 Division of Plant Industry

1,900 Ft. Rule


- **Epidemiologic study conclusions:**
To control the spread of canker, all exposed citrus trees within 1,900 ft. of an infected tree must be removed

 Florida Department of Agriculture & Consumer Services
 Division of Plant Industry

CCEP Obstacles


- **Biological**
- **Economic**
- **Legal**

Prior to 2004 hurricanes, all successfully addressed w/in available resources

 Florida Department of Agriculture & Consumer Services
 Division of Plant Industry


CCEP Driven by Science

- **CCEP developed and implemented based on sound science and regulatory principles**
 - Exposed-tree removal distances
 - Disease-spread patterns
 - Hurricane impacts
 - Survey Strategies

 Florida Department of Agriculture & Consumer Services
 Division of Plant Industry

Hurricane Impacts

- **August 2004, CCEP had removed all known canker outside of SE Florida**
- **Absence of hurricane activity in past 10 years left program w/lack of scientific certainty of what outcomes would be**
- **In late 2004 and early 2005, far-reaching impacts of hurricanes became apparent**

 Florida Department of Agriculture & Consumer Services
 Division of Plant Industry

Hurricane Impacts (cont'd)

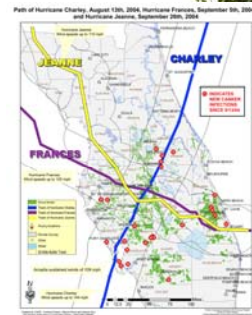
- # of commercial citrus acres infected/exposed to canker prior to August 2004 = 15,868 acres
- Since August 2004 apprx. 46,508 commercial citrus acres infected/exposed to canker



Florida Department of Agriculture & Consumer Services
Division of Plant Industry

New Canker Finds

- Charlotte County
- Collier County
- Highlands/De Soto Counties
- Orange County
- Lee County
- Orange County
- Charlotte County
- Osceola County
- St. Lucie County
- Indian River County
- Polk County
- Manatee County
- Clay County



Florida Department of Agriculture & Consumer Services
Division of Plant Industry

Program Challenges

- Sufficient manpower and infrastructure remain key to program success
- 2005 hurricane season



Florida Department of Agriculture & Consumer Services
Division of Plant Industry

New Strategies

- Shift resources to address new detections
- Program stakeholder meetings/assessments



Florida Department of Agriculture & Consumer Services
Division of Plant Industry

New Strategies (Cont'd)

- USDA Residential Sentinel Survey reassigned to grove survey
 - Two grove blocks selected in each township
 - Every tree surveyed
 - Second phase, expand to four different grove blocks in each township
 - Targeted surveys concentrated in areas most vulnerable to disease spread by hurricanes



Florida Department of Agriculture & Consumer Services
Division of Plant Industry

New Strategies (cont'd)

- Grower self-survey program
 - Designed to augment existing CCEP surveys
 - Over 2,000 industry members trained by UF/IFAS and CCEP
 - Growers posting their survey results on FDACS/DPI Web site
 - Many new finds detected by growers



Florida Department of Agriculture & Consumer Services
Division of Plant Industry

New Strategies (cont'd)

- Control strategies for increasing amount of acreage removed
 - Heavier equipment can remove a minimum of 200 acres/day
 - Contract in place early September



Florida Department of Agriculture & Consumer Services
Division of Plant Industry

New Strategies (Cont'd)

- Compliance Agreement Changes
 - CCEP Business Plan
 - Industry-improvement initiative
 - Plan to address how CCEP regulatory objectives will be met (who will be in charge of decon issues?; How will they assure compliance? What methodologies will be applied?)
 - Grove self-surveys
 - Mandatory training in canker identification
 - Schedule and reporting requirements
 - More rigid penalty system/increased regulatory security measures



Florida Department of Agriculture & Consumer Services
Division of Plant Industry

Current Status

- CCEP emphasis on determining extent of 2004 hurricane-related spread of disease and removal of infected/exposed trees
- Control of residential areas at least 70% complete
- Commercial control activities progressing w/industry support



Florida Department of Agriculture & Consumer Services
Division of Plant Industry

Control Reports 8/12/04 thru 8/12-19/05

Summary of Statewide Residential Control Actions as of 8/12/05

Area	Southwest	Central Florida	Clay County	West Coast	Treasure Coast	Totals
Positive Trees	1,736	1,191	20	160	131	3,238
Positive/Exposed Properties	12,839	17,528	213	1,943	4,460	36,981
Positive/Exposed Trees	31,967	56,080	287	5,243	11,605	105,202
Total Trees Controlled To Date	30,013	47,929	173	3,324	10,591	92,030
Properties Remaining to be Controlled	1,028	3,393	100	706	419	5,646
Trees Remaining to be Controlled	1,974	8,151	114	1,919	1,040	13,172
Percent Complete	94%	85%	60%	63%	91%	87%
Completion Date	9/15/2005	10/1/2005	9/15/2005	9/15/2005	9/15/2005	



Florida Department of Agriculture & Consumer Services
Division of Plant Industry

Commercial Citrus Destruction 8/12/04 through 8/19/05						
Area	County	Acres to be Removed	Acres in Progress	Acres Complete	Acres in County	Completion Date
Heartland	Highlands	8,778	1,573	4,583	74,623	10/15/2005
	DeSoto	3,771	1,793	1,354	68,559	10/15/2005
	Hardee	1,728	809	919	54,414	10/15/2005
	Polk	1,077	675	162	95,050	10/15/2005
	Oceola	1,150	-	-	13,804	10/15/2005
	Okeechobee	1,265	1,199	-	11,891	10/15/2005
	Total		17,770	6,048	7,019	318,341
Southwest	Lee	95	-	95	11,067	
	Collier	150	-	150	34,878	
	Charlotte	6,995	2,514	1,074	20,183	10/1/2005
	Hendry	5,722	5,300	-	93,155	10/1/2005
	Glades	350	-	-	10,103	10/1/2005
Total		13,282	7,814	1,319	169,386	
Treasure Coast	Indian River	1,137	250	27	47,539	10/1/2005
	St Lucie	16,941	5,646	5,526	82,987	10/1/2005
	Martin	1,919	713	756	40,330	10/1/2005
	Palm Beach	207	-	-	4,542	10/1/2005
	Total		20,204	6,609	6,316	175,398
West Coast	Hillsborough	1,410	1,150	-	19,187	10/1/2005
	Manatee	366	-	-	20,316	10/1/2005
Total		1,776	1,150	-	39,503	
Central	Orange	68	-	68	5,593	
Totals		53,099	21,621	14,722	708,221	

Public Outreach



- Industry Workshops
 - Over 800 members attended
 - CEU's earned
- Farm Workers Decontamination Training Program
 - 1,800 harvesters trained and over 150,000 farm workers trained
- Commercial Citrus Grower Self-Survey Training
 - 2,000 grove personnel trained



Florida Department of Agriculture & Consumer Services
Division of Plant Industry

Public Outreach



- **Up to 40 new public information liaisons hired in South Florida to assist in getting waivers signed**
- **Public education -- advance notification of impending IFOs/warrants**



Florida Department of Agriculture & Consumer Services
Division of Plant Industry

In Summary

- **Good overall public support**
- **Overwhelming industry support**
- **Public understands industry contribution to state's economic well being**
- **Canker was eradicated from Florida once (1915-1933)**
- **It can again, with similar resources, industry support, and cooperative perseverance over extended period of time**



Florida Department of Agriculture & Consumer Services
Division of Plant Industry

CITRUS CANKER

The threat to Florida agriculture



Citrus Canker Website:

www.doacs.state.fl.us/canker/

Citrus Canker Helplines:

Miami-Dade, Broward, Palm Beach, Monroe Counties

800-850-3781

All other counties

800-282-5153



Florida Department of Agriculture & Consumer Services
Division of Plant Industry

Thank you.



Florida Department of Agriculture & Consumer Services, Charles H. Bronson, Commissioner
Division of Plant Industry