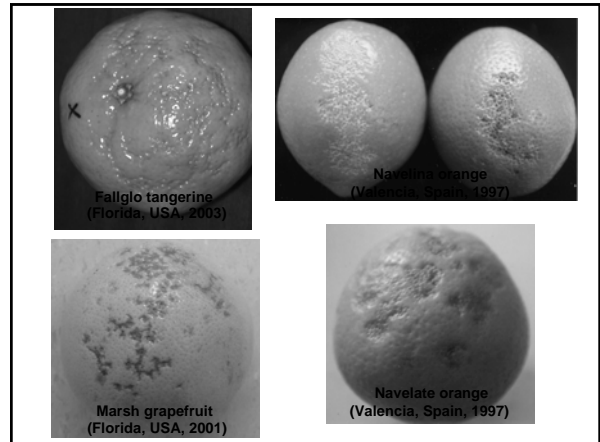


# Postharvest Peel Pitting Relating to Rapid Changes in Relative Humidity

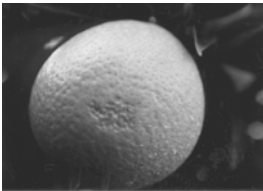
Fernando Alferez and Jackie Burns



## Postharvest Peel Pitting

In Spain is associated with dry hot winds followed by humid winds.

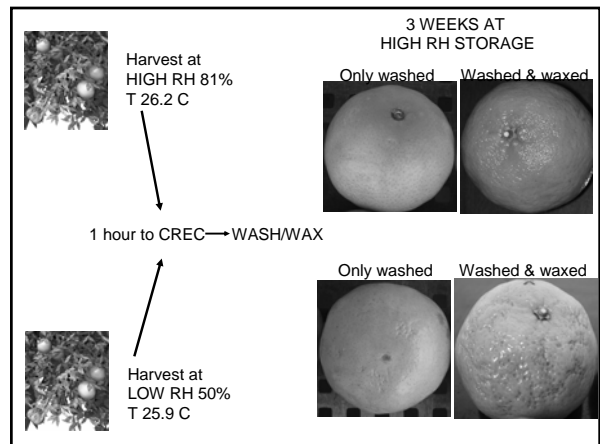
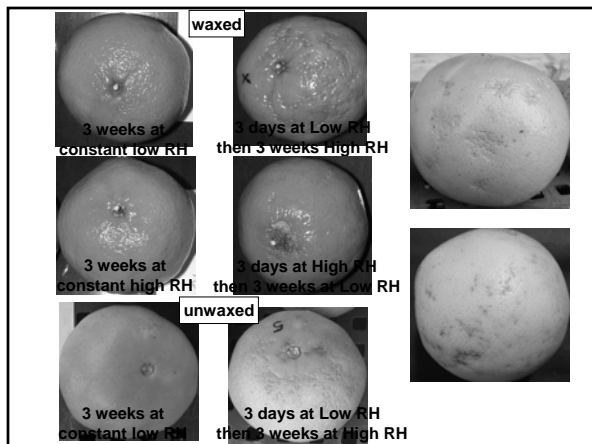
It may appear in fruit on the tree



## Testing the involvement of RELATIVE HUMIDITY in the origin of Postharvest Peel Pitting

IN FLORIDA:

- ▷ We know that peel pitting is related to waxing. But, we have seen peel pitting in unwaxed fruit.
- ▷ Peel pitting is seen in Spain when RH is drastically changed (low to high)
- ▷ Is peel pitting induced by similar RH changes in Florida? Also, what is the importance of waxing in peel pitting?



## CONCLUDING REMARKS

- ▷ RH is a very important determinant of Peel Pitting.
- ▷ Waxing makes Peel Pitting worst because waxing fruit increases its internal RH
- ▷ There may be other factors that cause Peel Pitting or make the symptoms more severe
- ▷ If low RH at harvest can "predispose" fruit to Peel Pitting", then Why isn't peel pitting more prevalent?