



New Varieties Development
NVDMC
& Management Corporation

Peter Chaires
NVDMC Staff

Varieties Commercially Available
Through NVDMC

IFAS Sugar Belle®

- Specialty Fruit
- Honey Bell x Clementine
- Matures 4-6 wks earlier than Honeybell
- Wide production range
- Susceptible to seeding
- Horticultural plan can result in 2 seeds/ fruit
- Robust flavor
- Grower, Packer, Nursery agreements
- Good budwood supply
- Tree Fee Applies



UCR Tango

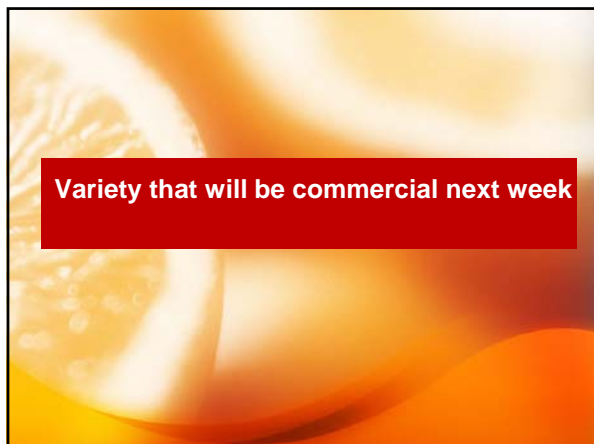
- Tangerine type
- L-Seeded or SL W-Murcott
- Early Production
- Good Budwood supply
- Thanksgiving – Mid Jan
- Easy peel
- Grower, Packer, Nursery agreements
- Tree Fee Applies



IFAS Valquarius™

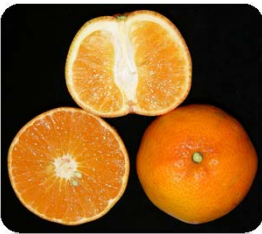
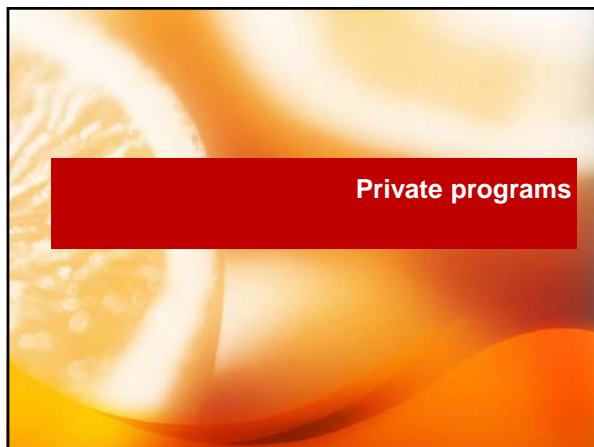
- True Valencia Orange
- Matures in January
- Equally productive
- Grower, Nursery Agreements
- Thorns are diminishing with mature budwood
- Available for trial or commercial
- Tree fee applies



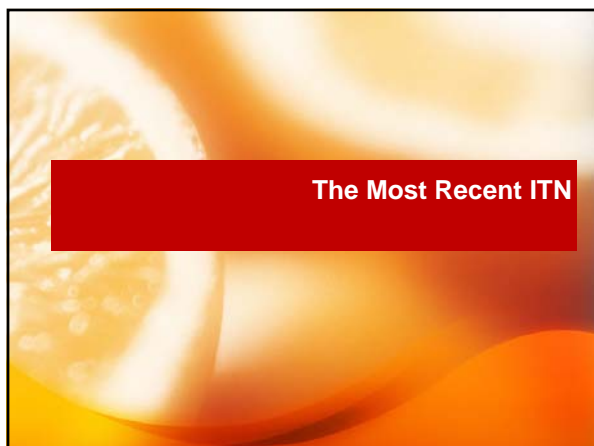
US Early Pride

- Nearly Seedless Fallglo
- Approx same early maturity
- Avg 2 seeds
- Requires pollen source
- First patented USDA citrus variety
- Managed federally
- License pending
- Available now for early evaluation
- Commercial license soon


Private Selections

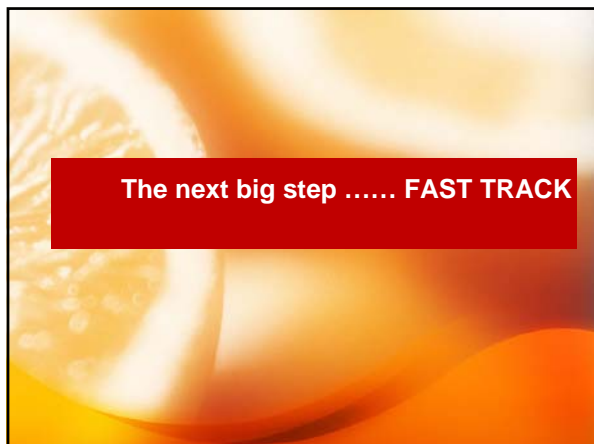
- W.G. Roe
 - Three new Specialty selections
 - Available to growers using the Noble Marketing Program
- BioGold
 - M-7 Early Navel
- Israeli Suite of Specialty Fruit Varieties
 - Contact information available



IFAS 5-1-99-5 Red Pummelo

- ITN in process
- Great flavor, color
- Thinner peel
- Tight seed pack
- Depending on licensing, may be available soon.





The Current Challenge

- The IFAS citrus breeding program is productive
- Many promising selections have been identified
 - **The fruit has promise, little else is known**
- More selections are coming
- Growers and packers don't want to wait on extensive traditional field trials
- Growers want to be involved in the evaluation process

FAST TRACK

- FFSP, IFAS, NVDMC
- A means of moving experimental fresh varieties to Florida growers for evaluation
- Florida growers participate in experimental trials and offer input on commercial decisions
- Future rates are fixed
 - **Encourage grower involvement**
 - **Generate revenue to the breeding program**
- Reward growers for participating
 - **Reduce future rates and head start**
- Allow late adopters to participate
- Three-Tier system

Tier One The Trial Stage

<h4>The Program</h4> <ul style="list-style-type: none"> • Statewide announcement of the opportunity • All Florida growers invited to participate • Growers sign up for experimental trials • Enrollment period is 180 days, then closes. • Sign Evaluation Agreement • Fruit not for sale • IFAS staff involved in process • Formation of Grower Groups • Utilize one nursery 	<h4>The Rate</h4> <ul style="list-style-type: none"> • \$50 participation fee per variety • Minimum of 5 trees • Maximum of 30 trees • Cost of trees reimbursed by grower
--	---

Tier Two

<h4>The Program</h4> <ul style="list-style-type: none"> • If grower evaluators identify a variety for commercialization • Those in the Tier 1 grower group are eligible to plant commercially • Favorable Rate • Five year Head Start • Entry of more nurseries 	<h4>The Rate</h4> <ul style="list-style-type: none"> • \$1.70 per tree • \$.20 retained by managing partner
--	---

Tier Three

<h4>The Program</h4> <ul style="list-style-type: none"> • After head start, all others may enter • No growers are excluded • Rates approximate commercial averages 	<h4>The Rate</h4> <ul style="list-style-type: none"> • \$2.75 per tree • \$.25 retained by managing partner
---	---

Summary

- High volume of material at experimental stage
- FAST TRACK provides
 - Enhanced grower involvement
 - Faster movement to commercialization
 - Eliminate poor performing selections early
 - Real-world evaluation
 - No one excluded
 - Early adopters rewarded
 - Incentive pricing
 - Revenue to research sooner
 - Coordinated effort with industry, FFSP, IFAS

