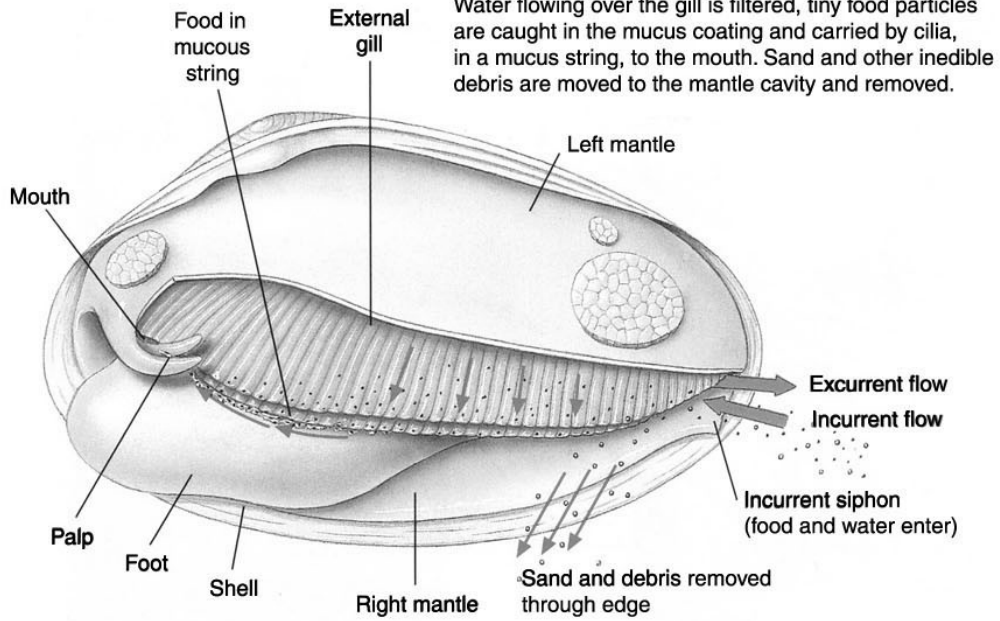


# Clam Dissection Information Sheet – Internal Anatomy

A. Feeding Mechanism of clam.



Water enters the mantle cavity from the rear and is pulled forward by the beating of cilia to the gills and mouth.

Water flowing over the gill is filtered, tiny food particles are caught in the mucus coating and carried by cilia, in a mucus string, to the mouth. Sand and other inedible debris are moved to the mantle cavity and removed.

B. Clam anatomy

